

PART OF SECTIONS 9 & 10, T.6N., R.2E., S.L.B. & M.  
**GREEN HILL COUNTRY ESTATES PHASE NO. 4**  
LOTS 59-77

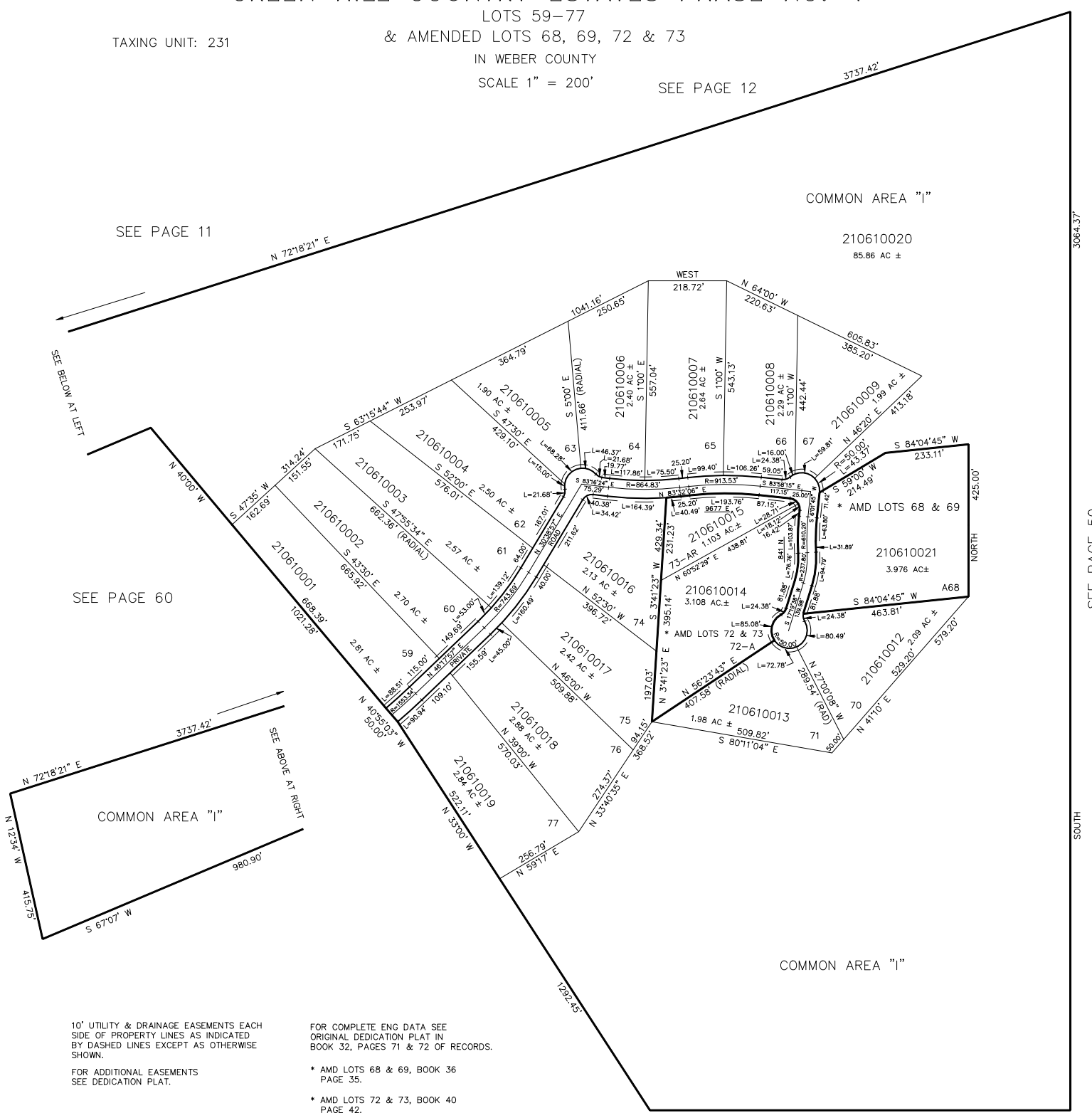
TAXING UNIT: 231

& AMENDED LOTS 68, 69, 72 & 73

IN WEBER COUNTY

SCALE 1" = 200'

SEE PAGE 12



10' UTILITY & DRAINAGE EASEMENTS EACH  
SIDE OF PROPERTY LINES AS INDICATED  
BY DASHED LINES EXCEPT AS OTHERWISE  
SHOWN.

FOR ADDITIONAL EASEMENTS  
SEE DEDICATION PLAT.

FOR COMPLETE ENG DATA SEE  
ORIGINAL DEDICATION PLAT IN  
BOOK 32, PAGES 71 & 72 OF RECORDS.

\* AMD LOTS 68 & 69, BOOK 36  
PAGE 35.

\* AMD LOTS 72 & 73, BOOK 40  
PAGE 42.